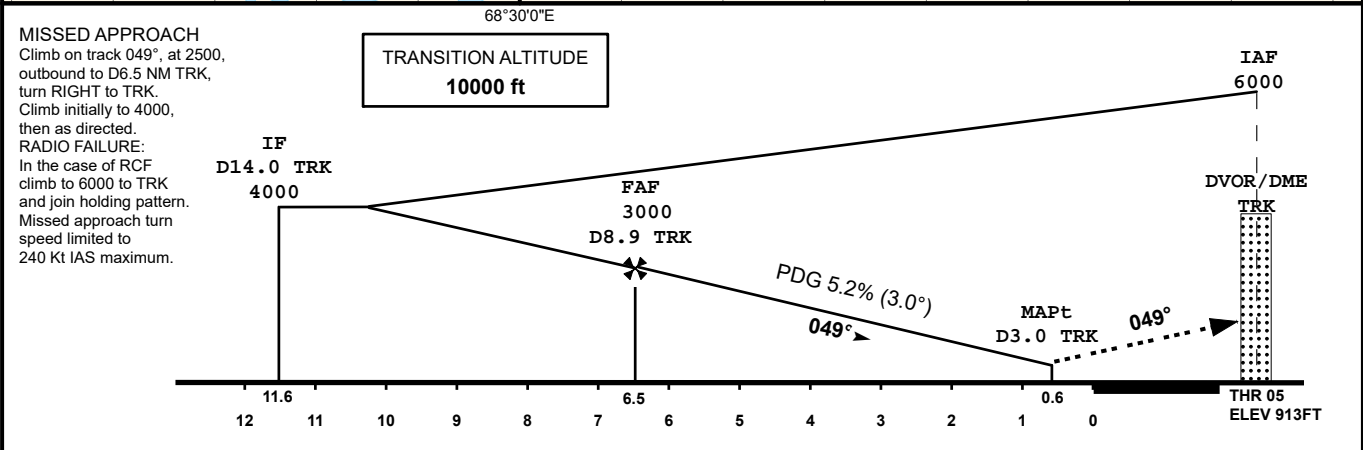
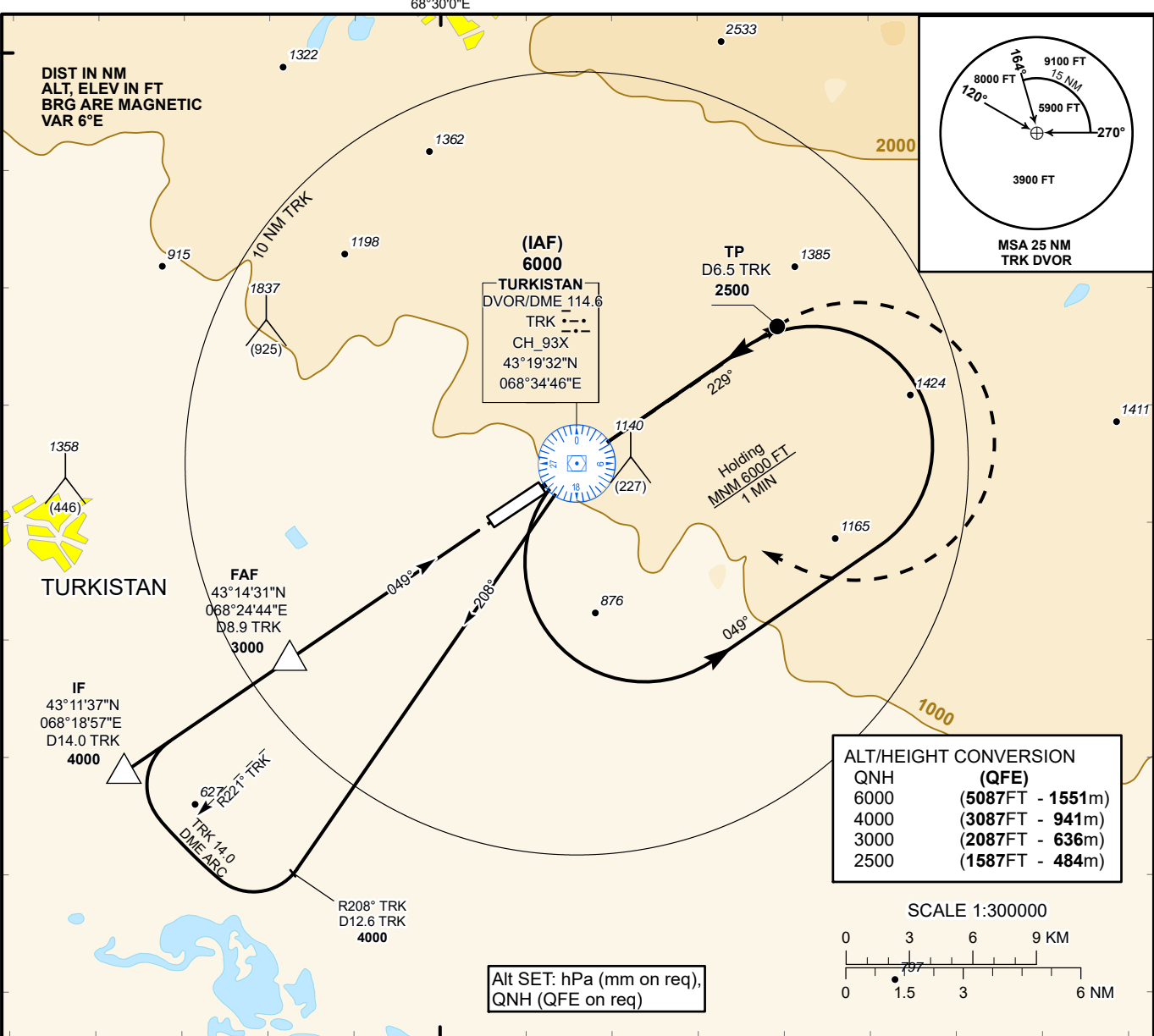


INSTRUMENT APPROACH
CHART
ICAO

AERODROME ELEV 989 FT
HEIGHTS RELATED TO
THR RWY 05 ELEV 913 FT

TURKISTAN TOWER 131.3
TURKISTAN ATIS (EN) 124.4
TURKISTAN ATIS (RU) 118.3

TURKISTAN
VOR/DME
RWY 05



Aircraft Category		A	B	C	D	DIST to THR	NM	6.5	6.0	5.0	4.0	3.0	2.0	1.0
Straight-in Approach OCA/H						DME TRK	NM	8.9	8.4	7.4	6.4	5.4	4.4	3.4
	VOR/DME	1220(310)	1220(310)	1220(310)	1220(310)	ALTITUDE	FT	3000	2872	2554	2236	1917	1599	1280
						HEIGHT	FT	2087	1959	1641	1323	1004	686	367
Aerodrome Operating Minima MDH ft x RVR(CMV)														
						GS	Kt	80	100	120	140	160	180	
						Desc.Rate (5.2%)	ft/min	420	530	630	740	840	950	
						FAF-MAPt	min:sec	4:25	3:32	2:57	2:31	2:12	1:58	

TURKISTAN
VOR/DME RWY05

AERONAUTICAL DATA TABULATION

VOR approach to RWY05 from TRK DVOR/DME	
Fix/point	Coordinates
TRK DVOR/DME (IAF)	43° 19' 32.3"N 068° 34' 46.1"E
D8.9 TRK (FAF)	43° 14' 31.3"N 068° 24' 43.5"E
THR RWY05	43° 18' 10.00"N 068° 32' 00.99"E
Final approach descent angle is 3.0°	